

## Basic ProjectShare DNA – Hosted

Basic ProjectShare DNA delivers ProjectShare.com as a subscription based service for your organization. With this deployment scheme you receive all the powerful features you need with the benefits of instant business solutions, lower initial cost and no burden on your IT infrastructure. Our hosted deployment scheme provides all the benefits of our ProjectShare DNA software in a timely and efficient manner. With Basic ProjectShare DNA we provide the server hardware, software, bandwidth and 24x7 support by hosting you application at our secure data center. This deployment option grants your company maximum security and control.

- Speed of Deployment
- Lower Cost of Entry
- Dedicated Maintenance

## Xtends ProjectShare DNA - Mixed Hosting solution

Xtends ProjectShare DNA (the only deployment scheme of its kind in the collaboration industry) is designed for customers with Windows® NT 4.0 or Windows® 2000 servers the ability to use ProjectShare.com in a highly flexible subscription based deployment scheme and simultaneously host their enterprise data on their servers. Xtends deployment schematic offering is a great solution and exceptionally priceless for customers with extremely large data requirements. Our quick installation will have your organization collaborating in hours. This deployment option grants maximum security, customization and control.

- Xtends ProjectShare DNA can be operational in minutes
- Transfer and store extremely large files with out worry of storage space
- Get updates without break in service

## Enterprise ProjectShare DNA

We sell our technology for you to deploy on your web servers. We have great pride in our application and have great relationships with our clients and through this plan we extend our application technology to your business' IT infrastructure for deployment. This plan is designed for companies that want complete control over the ProjectShare DNA application deployment and access to associated data. You can create unlimited client accounts, projects and users. Larger companies put this plan in place and deploy it for their entire enterprise. You buy it, you own it, and you brand it.

### Requirements

#### User Requirements

- Windows® 95, Windows® 98
- Windows NT ® or Windows® 2000
- Macintosh®
- Linux
- UNIX
- Internet Explorer
- Netscape Navigator

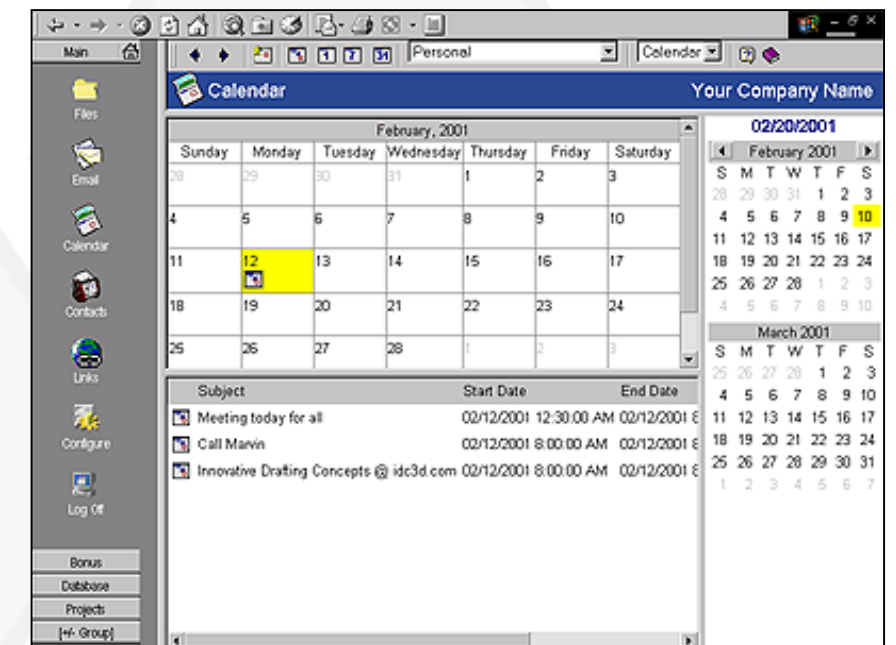
#### Server Deployment Requirements

- Microsoft SQL Server™ 7.0 or 2000
- Microsoft Windows ® NT 4.0, 2000 or Advanced Server™
- Internet Information Server

Get to work faster, stay well connected with your teams, your data and ultimately your business. ProjectShare.com DNA is the right choice for any size business's collaboration needs. Visit [www.ProjectShare.com](http://www.ProjectShare.com) today for more product information and online demonstrations.

With ProjectShare.com DNA, teams and companies in a common workspace may work closely together to collaborate on complex business solutions. This collaborative environment brings professional services personnel together to form a neural workforce that increases productivity, data unification and accuracy. ProjectShare.com DNA is available in many deployment schemes to fit your business needs. Deploy ProjectShare.com DNA on your servers; use our 'Xtends' plan (utilizing superior networked XML data services) or let us host your solution, the choice is yours.

## ProjectShare.com DNA (Dynamically Networked Applications) Application Technology Platform Overview

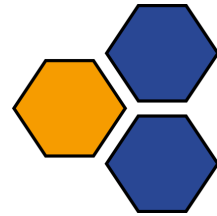


### A proven business application

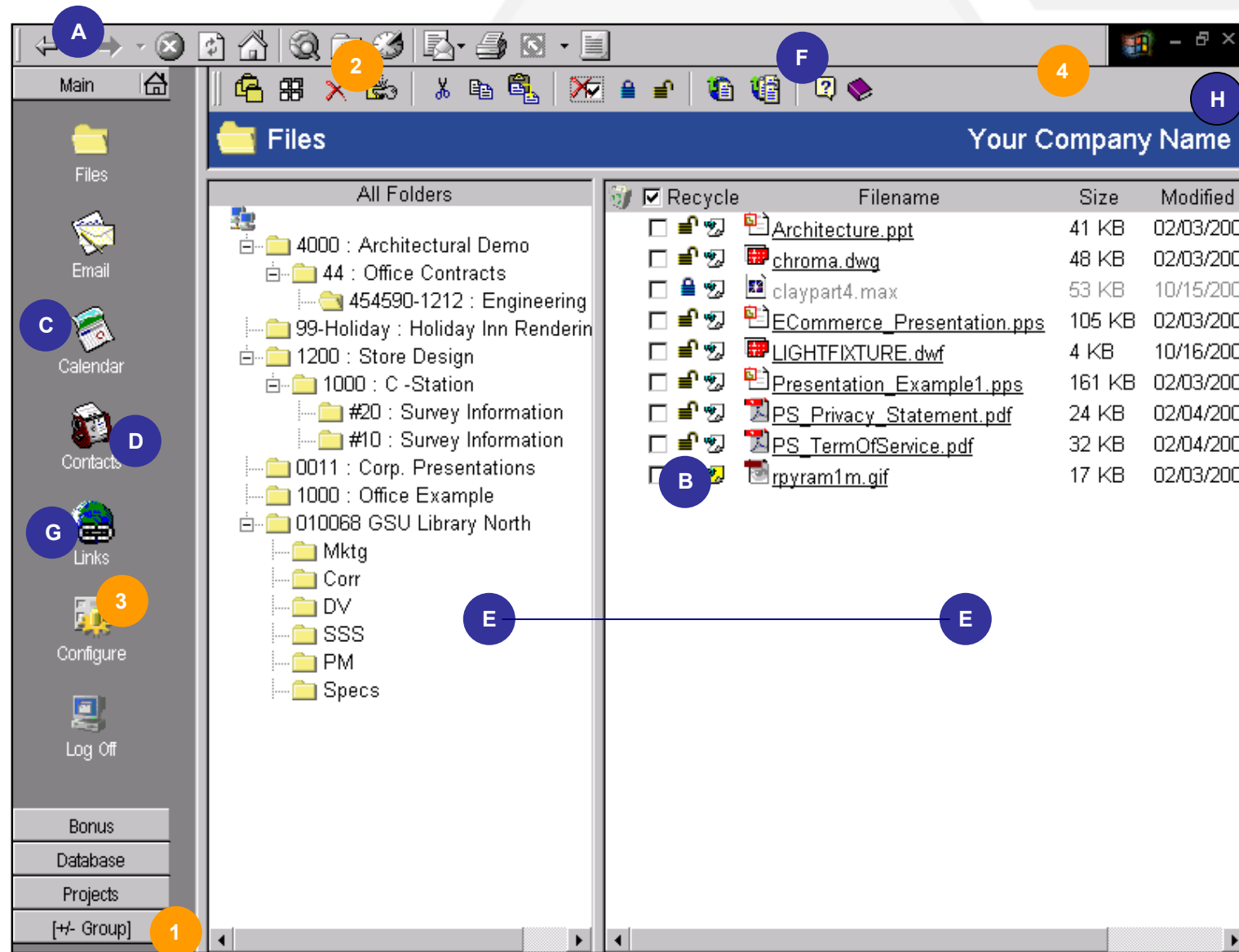
ProjectShare.com DNA Edition is a secure, Web-based collaboration application that can be quickly tailored for specific business objectives. ProjectShare.com DNA is based on years of production experience providing enterprise collaboration solutions for hundreds of companies. ProjectShare.com is used by over 300 companies in the USA and 50 + internationally. Those companies include BMW, Ford, ExxonMobil, StoreKraft, Kramer and Web2CAD.

### ProjectShare.com DNA delivers real results:

- Web-based user interface, is intuitive and easy to master right away, cutting learning curve and reaps productivity
- For distributed teams, enabling people from different departments, locations, and companies to work as closely as if they were in the same place
- Modularly designed to be a flexible application that may integrate with other Web-based applications to drive business solutions



## Web-based User Application Interface



## Users Experience

- A User Interface:**
  - ProjectShare.com is intuitive, clean, non-threatening, and utilizes a non-descript interface that integrates seamlessly into your current business's web-based application schemes.
- B Keep everyone on the same page:**
  - Annotations, discussions, real-time meetings, broadcasting and internal email are all elements available for teams to utilize to facilitate communication
  - Use the internal communication tools to cut cost and remote efficiency
- C Create calendar events:**
  - Use the workgroup threaded calendars to organize calendar events
  - View events by day, week and month
  - Distributed team members are up to date with latest team events
- D Share and distribute contact information:**
  - Create personal contacts, workgroup contacts and custom group contacts
  - Locate map and other contact data easily
- E File sharing is a snap:**
  - Easily navigate and store files into folders and access them from anywhere at anytime.
  - Attach annotated discussions to files and track changes
  - Manage files and folders effortlessly using standard features like cut, copy and paste.
  - Apply complex user access rights to folders easily with the access rights wizard
- F Quick tips:**
  - Get answers directly associated with the current active module by selecting the quick tip option
  - Cuts user learning curve
- G Use the links to organize important web sites:**
  - Centralize pertinent links
  - Link to shipping services directly
  - Import client web services and use as central portal for extended applications
- H Customized graphical elements that add additional branding:**
  - Company specific color "ID Bar"
  - Co-branded site
  - Co-branded login with graphics

## Administrators Experience

- 1 Build powerful Intranets and Extranets** with the embedded toolbar groups:
  - Organize the entire enterprise's applications into ProjectShare.com for a secure means of centralizing and managing web-based services
  - Create toolbar groups by department, discipline or even individual.
  - Link to relevant web resources or applications
  - Apply user access for a truly secure web-applications portal
- 2 Site threaded access:**
  - Administrators may apply site access directly within the current module
  - The user aware interface displays navigation and information associated by user
- 3 Get all user activity information:**
  - The site features a full application wide user activity tracking system
  - Search and report on all activities by user, event, date threshold and detail.
  - Preset activity log reports allow easy access to commonly used log information
- 3 Administer ProjectShare.com remotely**
  - Administrators have full access to administrative features at anytime from anywhere
  - Add users and invite them instantly
  - Add workgroup and organize teams
- 4 Secure collaboration environment**
  - Special filters protect against harmful content
  - Encrypted compressed data transfer
  - Encrypted page to page data ID's
  - Time out features
  - 24x7 proactive monitoring
- 4 Support the entire enterprise and associated personnel:**
  - Scale your solution across multiple servers, LANS and locations
  - Multiple directory schemes allow for a distributed solution utilizing various directory sources
  - Use multiple data sources in a mixed environment